

IM Software Installation

Windows OS

Minimum Requirements:

- Operating System - Windows 7: Service Pack 1
- Processor – Intel Core 2 or better, AMD Athlon II or better
- Processor Speed – 1.8 GHz or better
- RAM – 2 GB or more
- Internet Connection – 56 Kbps modem or faster
NOTE: Only the IMPro Universe eClinic features require an internet connection.

Preferred Requirements:

- Operating System - Windows 8 or Windows 8 Pro
NOTE: Windows RT is not compatible with IMPro Universe
- Processor – Intel Core “ix” Family (i3,i5,i7), AMD Phenom 2 or better
- RAM - 4 GB or more
- Internet Connection - DSL or Broadband
NOTE: Only the IMPro Universe eClinic features require an internet connection.

1 Turn on the PC and log in using administrative user security permissions. Make sure no applications are operating.

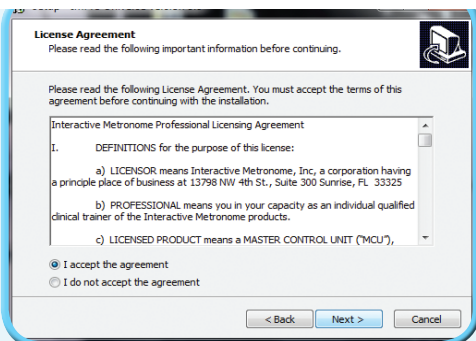
2 Insert the IMPro Universe CD-ROM into the CD-ROM/DVD-ROM drive of your PC.

3 An installation screen will automatically appear. If it does click next.

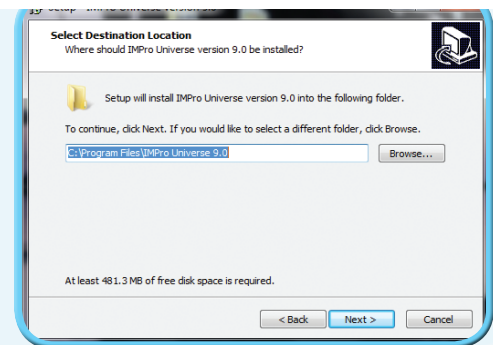


If it does not appear automatically, click on start in your taskbar and then select “Computer”. Find the appropriate disc drive and double-click the icon to open the installer.

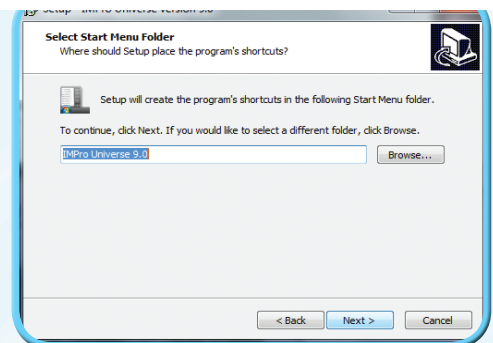
4 Accept the User Licence Agreement. Click Next.



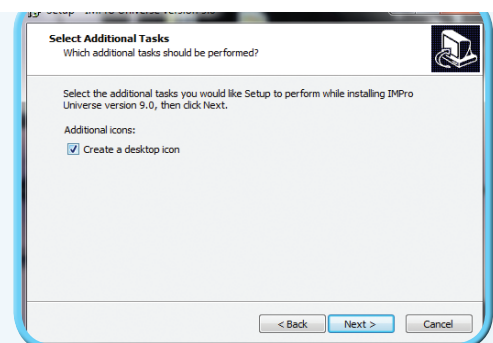
5 Confirm where IMPro Universe should be installed. Click Next.



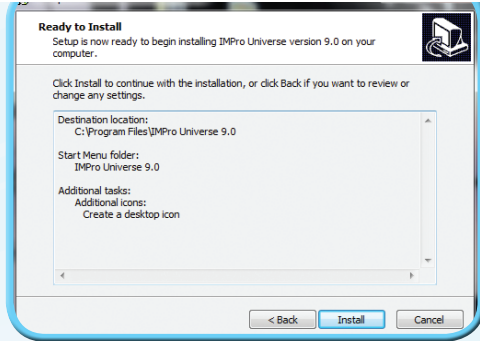
6 Confirm if you want to create a shortcut in your Start Menu. Click Next.



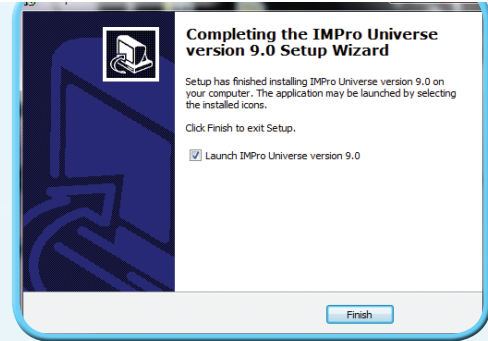
7 Confirm if you want to create a desktop icon. Click Next.



8 Verify all your installation settings are correct. Click Install.

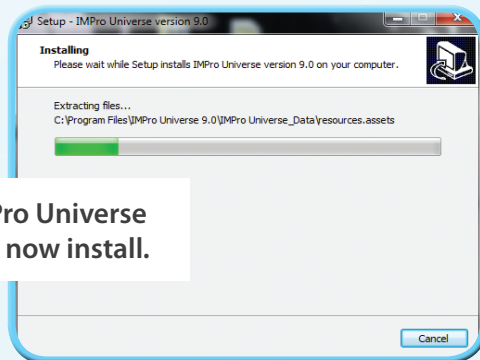


10 Once installation is complete click Finish and IMPro Universe will open.



You're ready to start training!

9 IMPro Universe will now install.



IM Software Installation

MAC OS

Minimum Requirements:

- Operating System - OSX 10.6
NOTE: iOS devices are not compatible with IMPro Universe
- Processor – Intel Core 2 or better
- Processor Speed – 1.8 GHz or better
- RAM – 2GB or more
- Internet Connection – 56 Kbps modem or faster
NOTE: Only the IMPro Universe eClinic features require an internet connection

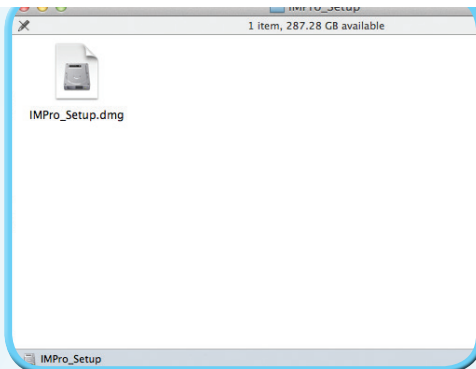
Preferred Requirements:

- Operating System - OSX 10.8
NOTE: iOS devices are not compatible with IMPro Universe
- Processor – Intel Core “ix” Family (i3,i5,i7)
- Processor Speed – 2.2 GHz or better
- RAM - 4 GB RAM or higher
- Internet Connection - DSL or Broadband
NOTE: Only the IMPro Universe eClinic features require an internet connection.

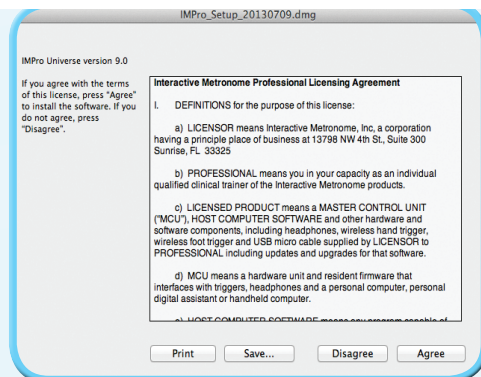
1 Turn on the MAC and log in. Make sure no applications are operating.

2 Insert the IMPro Universe CD-ROM into the CD-ROM/DVD-ROM drive of your MAC.

3 A window will automatically appear. Click on the .DMG file



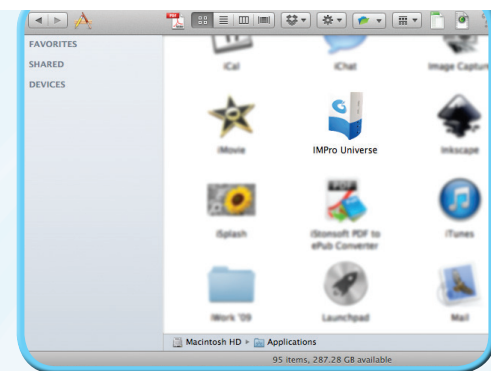
4 Agree to the Professional Liscense Agreement to continue install



5 Drag the IMPro Universe Logo to the Applications folder.



6 Find IMPro Universe in the Applications folder and double-click to open.



You're ready to start training!



IM Equipment Setup

1 FRONT OF THE MCU

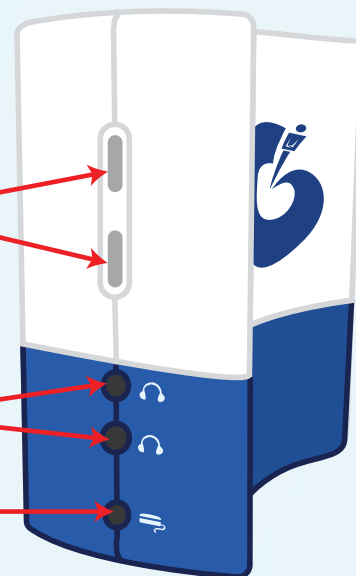
Locate the MCU.
The front of the MCU has:

- 2 Indicator Lights
- 2 Audio Ports
- Wired Trigger Port

INDICATOR LIGHTS

AUDIO PORTS

TRIGGER PORT



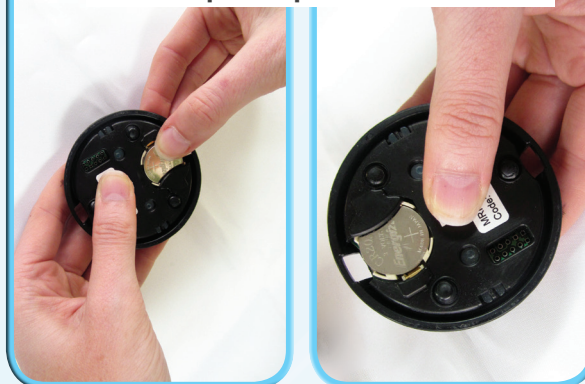
2 INSERTING THE BATTERIES

If you plan on using wireless triggers.
Please be sure to insert batteries correctly.



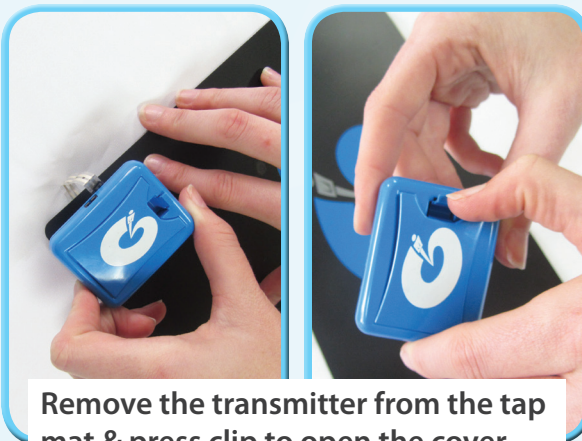
Squeeze the pressure clips to remove the cover from the button trigger

Slide the battery under the lip and snap into place



Replace the cover

Slide the battery under plastic piece and push down to snap into place



Remove the transmitter from the tap mat & press clip to open the cover



Reattach the transmitter to the Velcro & connect to the tap mat, snap securely into place



IM Equipment Setup

Your wireless triggers are now ready to use



Test that your triggers are working properly!

Click the button trigger, your MCU should blink a red light

Tap the tap mat, your MCU should blink a white light

3 CONNECTING WIRED TRIGGERS (Optional)

Connect the splitter to the front of the MCU in the trigger port



Connect the button trigger to the splitter



Connect the tap mat to the splitter




Your triggers should look like this



The lights on the MCU will blink **RED** when the button trigger is pressed and blink **WHITE** when the tap mat is touched.

4 PLUG IN THE HEADPHONES

Plug the headphones into one of the audio ports marked with a picture of headphones  on the front of the MCU



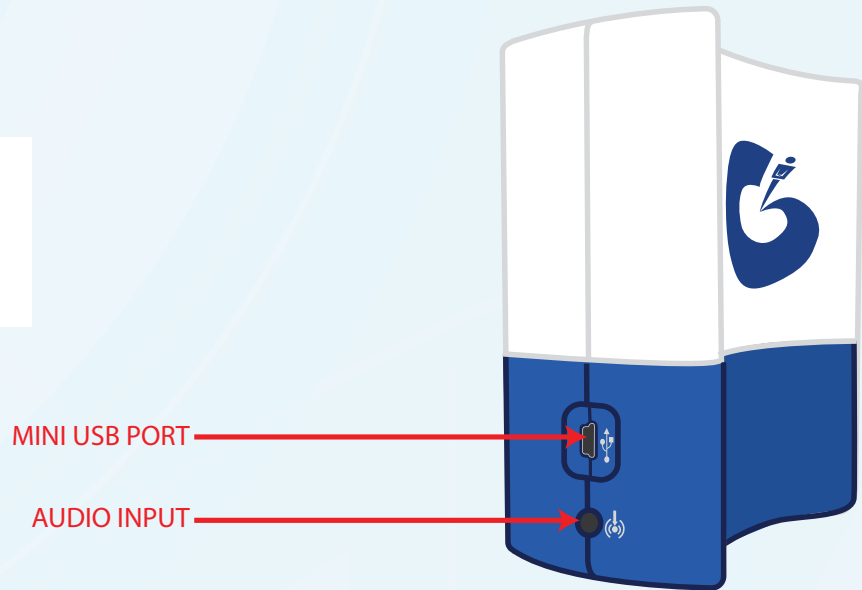
DO NOT FORCE THE HEADPHONES IN!

IM Equipment Setup

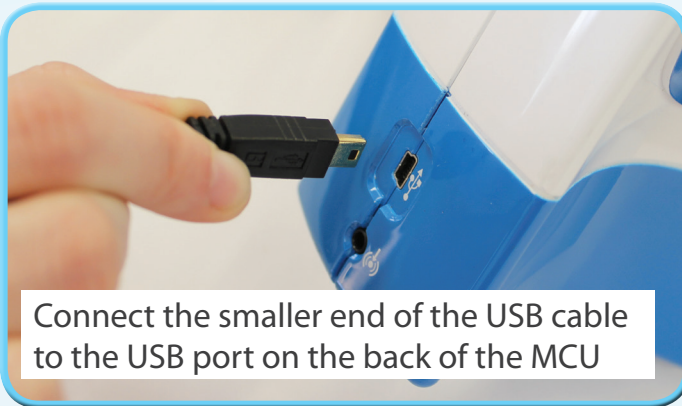
5 BACK OF THE MCU

The back of the MCU has:

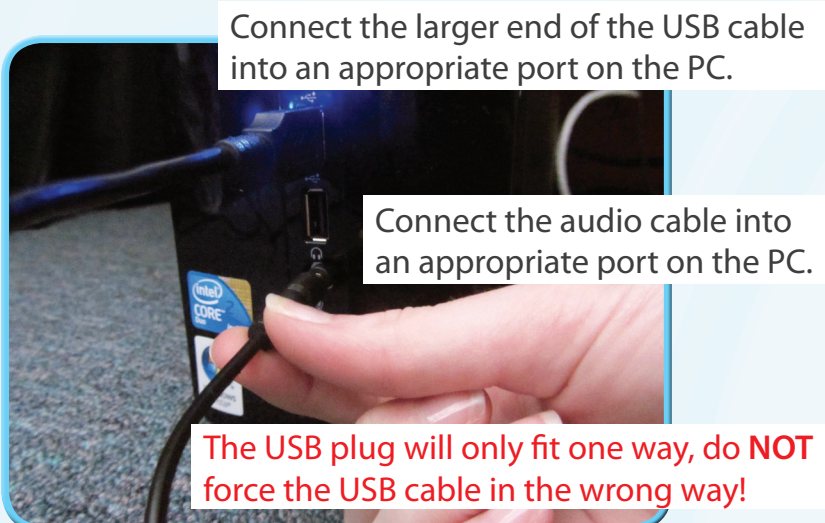
- 1 Mini USB Port
- Audio Input



6 CONNECT THE USB & AUDIO CABLES TO THE MCU



7 CONNECT THE USB & AUDIO CABLES TO THE COMPUTER



8 MCU READY TO USE

